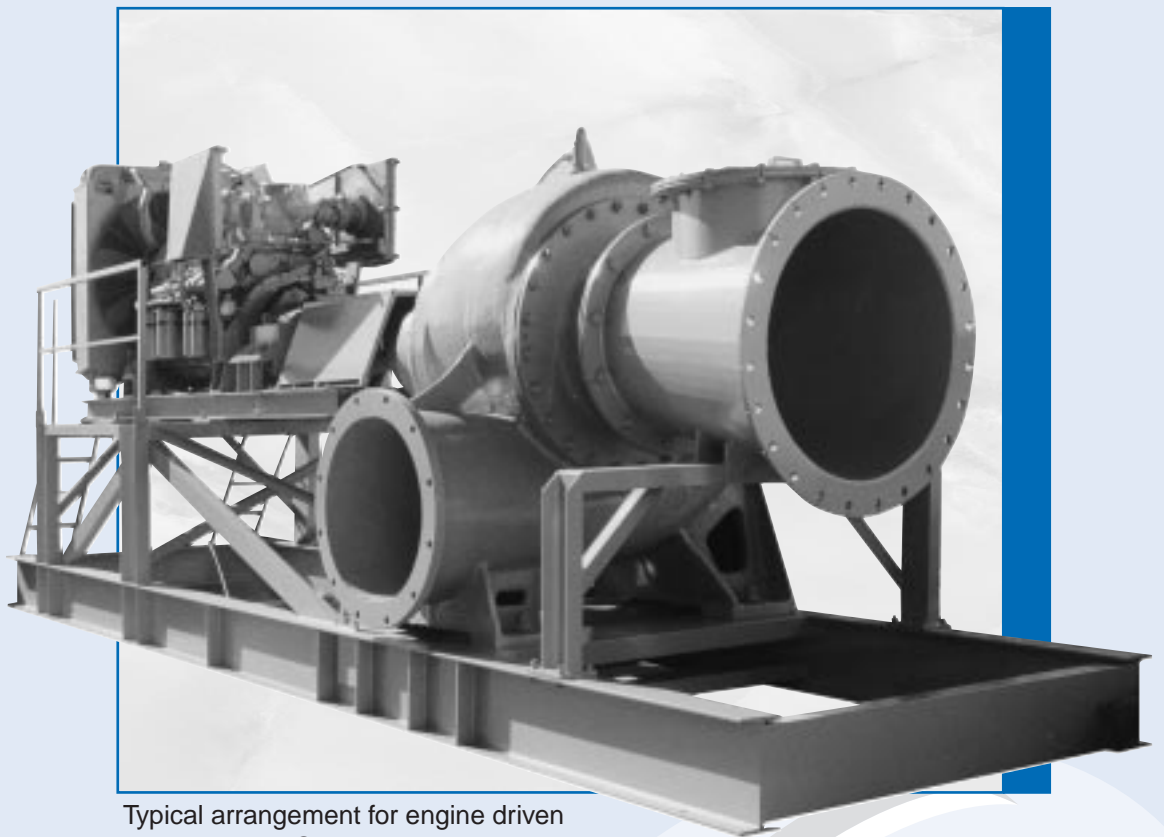


DPS **PUMPS**

HORIZONTAL MIXED FLOW CENTRIFUGAL PUMPS

HBC, HBG & HW Series



Typical arrangement for engine driven
800HW Pump Set

DPS PUMPS -

A Division of Diesel Parts & Service Pty. Ltd. A.C.N. 009 818 848

21 Hilda Street

Hamilton, Brisbane, Qld. 4007

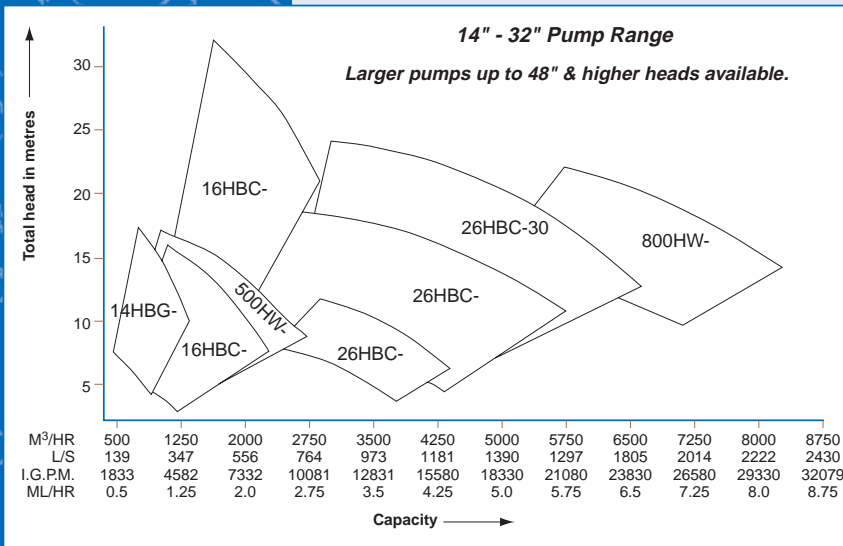
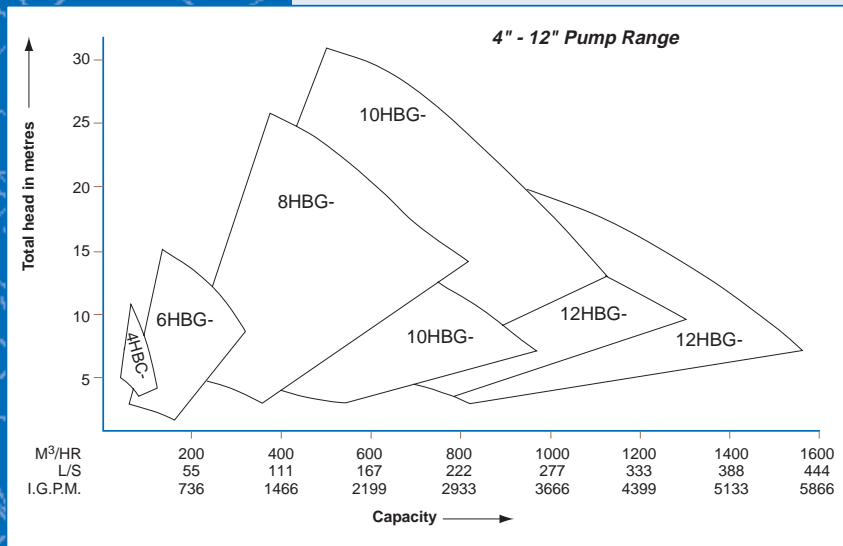
Ph: 07 - 3268 1062

Fax: 07 - 3868 1330

DPS PUMPS

HORIZONTAL MIXED FLOW CENTRIFUGAL PUMPS

HBC, HBG & HW Series



SPECIFICATIONS

Standard Pump:

CI/CI/HTS, packed gland with shaft sleeve.

Scope of supply:

4" - 12" - pump with 90° swivel bend, 2 x 55° universal swivel bends, factory footvalve, tools & manual.

14" - pump with 90° bend, footvalve, tools & manual.

16" - 26" - pump with 90° & 27° bend, discharge flap valve, suction bell, tools & manual.

32" - pump with discharge flap valve.

OPTIONS

Stainless Steel Shafts & Shaft Sleeves

Stainless Steel, Bronze or Ductile Iron Impellers

Bearings for High Side-Load Applications

RANGE

Outlet Size: 100mm to 800mm (4" to 32")

Capacity : 50 m³/h to 8500 m³/h

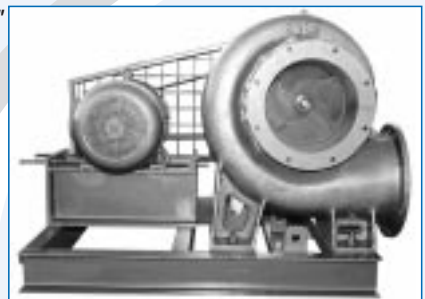
Head: 2 mtrs to 35 mtrs

Power: 3 Kw to 420 Kw

4" - 14"



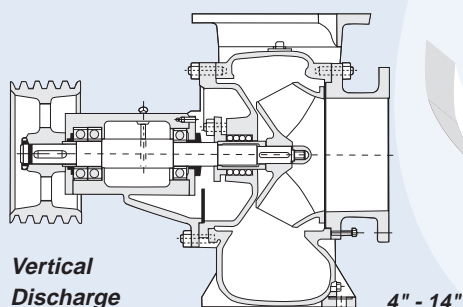
14" - 32"



Pump Sets:

All models are available as complete pump sets:

- Diesel engine driven - direct, gearbox or vee belt
- PTO tractor driven - standard or 3 point linkage
- Electric motor driven - direct or vee belt
- Hydraulic motor driven - direct or gearbox
- Line shaft arrangement - vertical or slope design
- Tank arrangement - above or below ground design



DISTRIBUTED BY: